



# Specialist in Care Communication



Head Office

# INDEX

3	INDEX
4	GENERAL INFORMATION
6	PRODUCT OVERVIEW
8	TELE CALL
10	MULTISENSE
12	BED ALARM
14	FLOOR ALARM
16	CHAIR ALARM
18	EPI-WATCHER
20	TABLE ALARM
22	WANDER GUARD SYSTEM
24	CALLHELP
26	NURSE CALL SYSTEM
28	DOOR ALARM
30	AGITATION DETECTOR
32	HOME CARE SOLUTION
34	WIRELESS CUSTOMISATION



# Easy to use, practical, and affordable



**Almost 30 years, Vahlkamp has been developing and producing wireless alarm systems. From our company philosophy, we are continuously striving to make ideal combinations of ease of use, practicality, and affordability; always from the starting point that safety and security are core values where the most vulnerable groups in our society are concerned. Vahlkamp endeavours to develop products on the basis of concrete demands made by the target group. This is what we have been doing for twenty-five years. And this is what we will continue to do.**

## WHO?

Vahlkamp develops alarm systems – if necessary in combination with in-house services – for the wide application area of healthcare, geriatric care, psychiatric care, and care for the handicapped. Our product range is directed at institutions, such as hospitals and nursing and residential homes, as well as small-scale residential services and organisations that offer extramural care.

## WHAT?

Safety, security and trust. All products developed by Vahlkamp will turn any user's living environment into a safer, more comfortable place to be. Our systems are developed in such a way that they are always integrated into an existing technical infrastructure. Naturally, we can also provide you with a complete package; customised to the specific circumstances of each individual user.

## INNOVATION

To some manufacturers, innovation means the development of products from their own expertise. To Vahlkamp, innovation means a lot more than just that. For example, finding innovative solutions to actual requirements. This concrete innovation is 'hidden' in the technology or software we use. At all times, the user is presented with an easy to use and practical device. We do not believe that security and trust is created by a complex panel cluttered with knobs and lights.

## SERVICE

Alarm systems must never fail. That's why Vahlkamp has invested many years in product development before a system is actually launched on the market. And in the unlikely event of a failure occurring, our service department will guarantee a prompt, flexible and friendly service to solve your problem.

## LARGE AND SMALL

As extramural care is on the increase, so is Vahlkamp's market share. And while these developments are going on, we continue to invest in

new developments for smaller groups of people in need of care. One example of these is the very innovative Epi-Watcher, which was developed to help epileptic patients as well as the people looking after them enjoy a good night's sleep.

## AFFORDABLE

Vahlkamp develops and manufactures completely on its own account. By delivering straight to the end user, we are able to sell our systems at highly competitive prices. In addition, our internal organisational structure enables us to develop customised as well as the standard products in our product range.

## SUSTAINABLE

Developing products for the health-care sector requires a certain amount of idealism. At Vahlkamp, we are well aware of this. Sustainable and socially responsible entrepreneurship has formed the heart of our operation for almost 30 years.



Easy to use, practical, and affordable

## Product overview

### 1 Callhelp

A Nurse Call System based on pagers, which is suitable for social living units, hospices and small nursing homes as well as larger institutions.

### 2 Tele Call

A wireless alarm system with various versions (see pricelist) that enable any new or existing alarm system to be activated by means of a small alarm transmitter and a receiver. If you encounter a situation whereby it is desirable that the existing Tele Call system is modified, please contact us and we will look for a solution together.

### 3 Multisense

Infrared bed-alarm, wired or wireless, which is placed next to the bed.

### 4 Bed Alarm

A separate bed mat or strip with a transmitter unit with adjustable time lag, to signal the getting in and out of bed. The bed alarm is also available as a wireless version; both systems operate as an addition to the existing alarm system.

### 5 Chair Alarm

Same as the bed alarm, only with a mat measuring 34 x 34 cm.

### 6 Floor Alarm

An alarm mat that will activate the existing alarm system as soon as the resident stands on it. The floor alarm is also available as a wireless version; it operates as an addition to the existing alarm system.

### 7 Epi-Watcher

The Epi-Watcher is a simple, yet safe product that will register epileptic seizures. It offers a range of connection options. The alarm is operated by means of radio waves as soon as the sensor receives vibrations. A built-in timer ensures that the alarm cannot go off when the patient merely turns over in his sleep. The major advantage of this device is that the alarm will register all seizures and store up to ten of these. If desired, small seizures can be registered only, without triggering the alarm.

### 8 Table Alarm

An alarm available in two versions, one in the form of a wireless table board with built-in transmitter and another one in the form of a small, thin table mat with a transmission unit attached to it. Both can activate the existing alarm system by means of a light press of a hand or elbow.

### 9 Wander guard system

A wireless system that will monitor residents and will signal when they leave a certain room.

### 10 Nurse Alarm System

This wireless receiver system is suitable for homes or departments that are not equipped with a fixed alarm system. This Nurse Alarm System can receive notifications from the above-mentioned products; these alarm notifications can activate a beeper carried in a nurse's pocket, for example.

### 11 Door Alarm

A system that will, for example, notify an existing alarm system when a person leaves the room or enters a toilet area.

### 12 Agitation Detector

A system that will immediately notify an existing alarm system in case of certain sounds.







## Tele Call

An extra reassurance

**The Tele Call is a simple solution for difficult moments. If standard solutions will not work, extra creativity is needed. And with all its accumulated creativity, Vahlkamp developed the Tele Call. It's a system that expands upon any existing alarm system with an extra reassurance.**

### Just in time...

Alarm systems in geriatric, nursing and residential homes should ensure the security of patients and residents. A single press on the alarm button should ensure prompt medical assistance. However, in some cases, a standard alarm system will not suffice. Especially in emergency situations, the user may not be able to reach the button in time, or at all. Tele Call will expand upon your existing alarm system and provide you with extra reassurance: accessibility from all corners of the room or apartment.

Tele Call consists of a small, convenient transmitter, which the patient or resident can wear around the neck, carry in the pocket, or have pinned on the shirt. A receiver unit is connected to the existing alarm signaller, which will directly pass on the signals from the transmitter to your nurse alarm system. An audio-visual signal, consisting of a beep sound and a small red light, will immediately confirm that the nurse alarm system has been notified. This way, the user can rest assured that help is on its way. In front of the window, in the kitchen, in the bathroom or toilet: help is within reach anywhere and at any time.

### Easy to use

All the reception unit requires is a 220-V wall socket. The transmitter is delivered with a battery that will ensure proper operation, year after year. Special pushbuttons are available for people with poor hand function. These buttons are operated with extreme ease.







## Multisense

To create a safe environment.

**Convenient, easy, and reliable. The multisense infrared bed alarm will guarantee a good night's sleep for patients and residents. With this easily and quickly installed bed alarm, you have obtained a surprisingly complete instrument to create a safe environment. Nobody need lie awake anymore, for whatever reason.**

Vahlkamp has developed a range of bed-alarm products. With this infrared bed alarm, you can ensure that prompt action is taken when users leave their beds inadvertently and for whatever reason. This way, optimum assistance is offered to patients in need of help.

The multisense is placed near the patient's bed in a discreet way. The unit is easily and simply positioned, moved, mounted, and switched on and off. Whenever the patient leaves the bed, this is detected and the nurse alarm system is activated. False detection – false alarm – will rarely occur, if at all. This way, fast and adequate help can be provided. When the patient is taken care of, the alarm is easily reset. Either by means of a switch on the unit itself, or from a remote location.

The multisense can be delivered wireless or wired. In case of the wired version, the multisense is connected to the nurse alarm system using an extension cord. In case of the wireless version, a reception unit is plugged into the existing nurse alarm system. The transmitter unit is equipped with infrared detection.







## Bed alarm

A simple solution for difficult moments.

**A good night's sleep. And peace of mind. Vahlkamp developed the bed alarm especially to keep an eye on patients who cannot leave their bed without assistance. This alarm is particularly user-friendly and reliable.**

This alarm product allows patients who should remain safely in bed to be continuously watched over. This way, the people looking after them will have their hands free to attend to other matters. After all, a patient or resident equipped with such an alarm will no longer need constant attendance.

The operation of this alarm product is very simple indeed. The bed alarm, is quite inconspicuously, put under the patient's mattress. The time-lag switch should be set to the correct time period. After the patient has left the bed and the set time has passed, the nurse alarm system is activated. This way, fast and adequate help can be provided. If the patient needs care, the bed alarm is easily switched off by means of a small cabinet mounted to the bed.

The bed alarm is available both wireless and wired. The wired system uses an adjustable time lag and should be connected to a nurse alarm system using an extension lead. The wireless alarm has its own transmitter and receiver unit. The receiver unit is plugged into your existing nurse alarm system.





## Floor Alarm

A simple solution for difficult moments

**Peace of mind and a feeling of security. The floor alarm developed by Vahlkamp is an ideal extension to the existing range of user-friendly alarm products. The floor alarm ensures peace of mind and a feeling of security and allows prompt intervention in case of an impending emergency situation.**

A simply placed floor mat forms the basis for this particularly innovative alarm product. The alarm mat is placed in a strategically chosen place in the room or bedroom of the user, for example near a door or a bed. As soon as the user stands on the mat, the automatic alarm system is activated.

This alarm product is available both wireless and wired. The wired system uses an adjustable time lag and should be connected to a nurse alarm system using an extension lead. The wireless alarm has its own transmitter and receiver unit. The receiver unit is plugged into your existing nurse alarm system.







## Chair Alarm

A simple solution for difficult moments

**For some patients, it is not safe to leave the chair in which they are seated without assistance. Because they are limited in their mobility or otherwise, they might fall if they do. Like the bed and floor versions, the chair alarm is a relatively simple means to warn a nurse, a volunteer or family member, or another person looking after the patient, should he or she leave the chair.**

This alarm product provides an ideal means to permanently watch over a patient. The chair alarm is simply placed on top of or underneath the chair cushion. If the user leaves the chair and the preset time has elapsed, the nurse alarm system is activated. This way, fast and adequate help can be provided.

The chair alarm is available both wireless and wired. The wired system uses an adjustable time lag and should be connected to a nurse alarm system using an extension lead. The wireless alarm has its own transmitter and receiver unit. The receiver unit is plugged into your existing nurse alarm system.



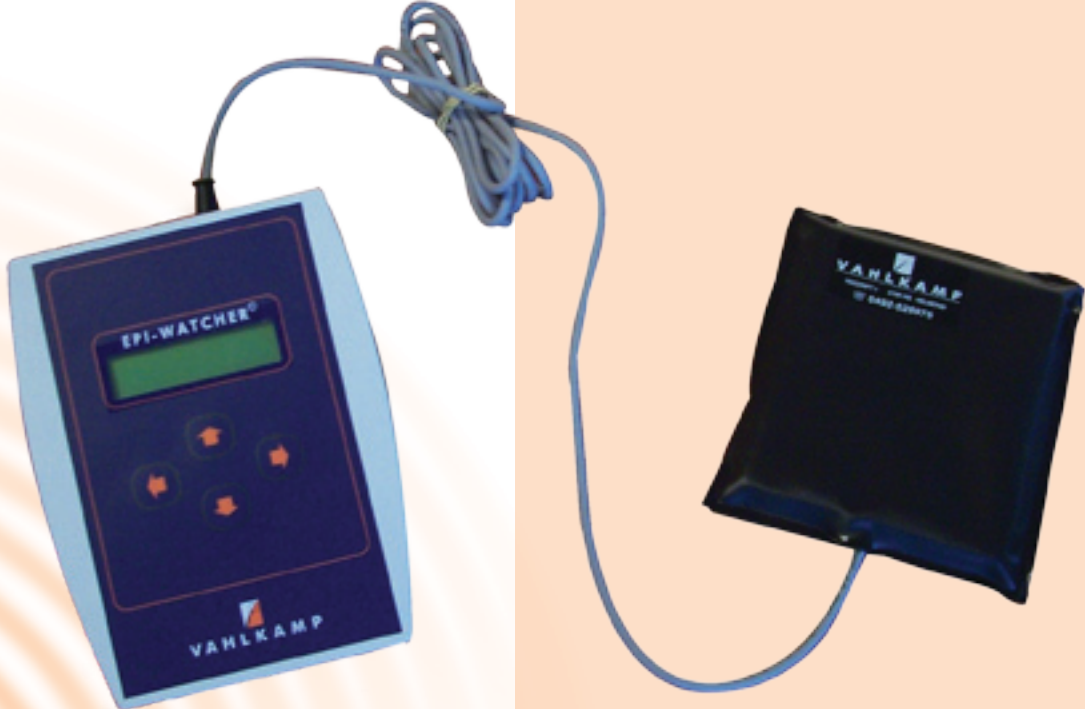




## Epi-Watcher

A simple solution for difficult times.

**Epilepsy and a good night's sleep. Two things that rarely exist side by side – as many of you will know. In order to achieve this much-yearned-for good night's sleep, Vahlkamp developed the EPI-Watcher: a unique device that registers epileptic seizures and subsequently triggers an alarm. The device was developed in close collaboration with SEIN, the Dutch foundation for Epileptic institutions.**



Of course, you want an alarm that will alarm you. The problem with real epileptic seizures is that they are often hard to distinguish from other movements. Some devices will – falsely – trigger an alarm whenever the patient makes the slightest movement. As a result of years of development, the Epi-Watcher, on the other hand, will prove a highly reliable partner. A partner that will warn you in case of a seizure, and only in case of a seizure.

The Epi-Watcher is a simple, yet safe product that will register epileptic seizures and offer a range of provisions for connection. The alarm is operated by means of radio waves as soon as the sensor receives vibrations.

A built-in timer ensures that the alarm cannot go off when the patient merely turns over in his sleep. The major advantage of this device is that the alarm will register all seizures and store up to ten of these. If desired, small seizures may be registered only, without triggering the alarm.

The device is provided with a wireless alarm bell. The wired version is integrated. The Epi-Watcher will also transmit a spoken message to pre-programmed numbers. It goes without saying that the Epi-Watcher can be connected up to virtually any emergency centre.





## Table alarm

A convenient and easy-to-use system.

**One of the things that distinguishes Vahlkamp in the market is the development of alarm products for relatively small target groups. For example, the table alarm, which is especially suitable for people with poor hand function.**

**This table alarm is a convenient and easy-to-use system. And for an even smaller, more specific target group, we developed the table-alarm mat.**

Alarm systems in nursing and residential homes should ensure the security of patients and residents. One press on the alarm button and the nursing staff will know that prompt assistance is needed. But what if you have a patient with poor hand function, for example because of rheumatism or paresis?

### **For people who are unable to press buttons**

The table alarm and the table-alarm mat are convenient tools for people who are unable to press buttons. Both alarm systems are completely wireless. The alarm signal is passed on to the alarm system via a transmitter (maximum distance 15 m).

The table alarm is a convenient alarm set comprising an alarm unit and a reception unit. The alarm unit is equipped with an integrated transmitter and has a height of 18 mm. This alarm unit is placed wherever the user is at that moment; for example on a table in the day-care centre, on the wheelchair, the bed, or the bedside table.

For those who are unable to bridge the height of the alarm unit, the table-alarm mat was developed. This alarm mat measures 170 x 170 mm and has a height of only 4 millimetres. By means of a cable with plug, the mat is connected to a small transmitter unit that can be mounted to the bottom or side of, for example, a table. The only thing the resident has to do is exercise a slight pressure onto the alarm mat.

All that is needed for the reception unit is a plug facility into the alarm system and a 220-V wall socket. Because installation of the parts is extremely easy, a simple operation suffices to move the table alarm to another room.







## Wander guard system

The highest possible freedom with the highest protection required

**The Wander Guard System is the ideal monitoring application in day care centres and their vicinity. It enables disoriented residents or patients to move freely in specifically designated areas. The system keeps watch, signals and registers the departure of residents from this specified area. It was hardly possible to date to exactly trace the position of so-called „wander-off“ residents or patients.**

The wander guard system supplements and extends the former system with the advantages of GPS technology and thereby enables the exact positioning of persons outside your institution. A programmable radius, called Geofence, delimits parks or walks and guarantees an invisible protective fence in extremely user friendly operation.

The GPS system watches over them, but only transmits a signal if they leave the protected area. Personal rights are therefore not violated.

The signals are transmitted to a GPS cell phone or your in-house server. Your residents can be located in the shortest possible time. The positioning signal of their location is received on a mobile Smartphone by GPS and displayed on a map.

### Main benefits and technical details:

- \* reliable detection by automatic field control
- \* Splashproof
- \* easy battery replacement
- \* patented bracelet closure
- \* escort function
- \* trigger different care communication systems or products
- \* direction detection
- \* acquisition range 0,5 – 7.0 meter
- \* elevator control
- \* feed forward other sensors and actuators
- \* remote maintenance
- \* permanent monitoring of the system itself
- \* alarm possibility
- \* locating by GPS
- \* selective door control of the residents room
- \* selective control of other rooms
- \* acquisition logistics
- \* theft monitoring

The Wander Guard guarantees optimum and comprehensive protection as well as a high degree of freedom of movement. The system functions both inside and outside buildings and features combined energy management. The GPS function is only activated if the resident leaves the proximity zone. The service life of the GPS transponder storage battery is thereby considerably prolonged.







## Callhelp

### Plug-and-play Nurse Alarm System with Pager

**Deciding upon a nurse alarm system by one of the many market parties is a tough job; not only concerning the installation itself, but also concerning the business-economic means. An average nurse alarm system could easily cost some € 450 per room. In addition, a substantial basic investment will be required for the installation of infrastructure and central units. Careful weighing of the pros and cons is therefore required before deciding to invest in such a system.**

Many care institutions cannot afford such an investment, resulting in make-shift solutions – even the mechanical handbell is still regularly resorted to. Vahlkamp has a nurse alarm system based on pagers, which is suitable for social living units, hospices and small nursing homes, as well as larger institutions.

#### Easy of use

The system is characterised by its ease of use and practicality. And thanks to its wireless communication, it is extremely easy to install. Each room has a necklace transmitter; with one press on the button, the central unit is notified and the nurse will immediately see in which room assistance is needed.

#### The system's accessories

Pagers are used to provide assistance. The notification is passed on to the pager of a member of the nursing staff. Thanks to a booster station, the system has a guaranteed reach of 300 storeys in a block of flats. Additional options include the direct paging of a beeper by means of a telephone link.

#### Maintenance and repair

The system is easily and quickly exchanged and can, therefore, be kept fully operational almost continuously.







## Nurse Call System

A simple solution for difficult times

**The nurse alarm system, or ZAS, is a recognised system that is used to transmit an alarm to a pager, e.g. from a bed alarm, a Tele Call, or an agitation detector.**

**The system is quite popular in the Dutch healthcare sector, for example in places that have no alarm system of their own, such as sheltered accommodation or surrogate family units. ZAS is also used as an addition to existing systems.**

### **Very easily connected and operated**

The ZAS is easily combined with other wireless nurse alarm systems developed by Vahlkamp. Over the past years, it has proved an ideal solution for small residential homes especially. The pager allows nurses to leave the nurses' station, because as long as they remain within a 250-300 metre radius, they will still be accessible.

Like all alarm products by Vahlkamp, the ZAS is very easily connected and operated. The system is simply connected to a 220-V wall socket and to an alarm device such as the Tele Call, the bed alarm, chair alarm, Wander guard system, table alarm, agitation detector, or floor alarm. If any of these devices is switched on, the ZAS will emit a signal. Within a radius of up to 250 – 300 metres, the pager is able to receive this signal, whereupon it will be activated.

### **All the knowledge and experience to meet your needs**

The nurse alarm system is provided by Vahlkamp. This company has all the experience and knowledge needed to meet the communication needs of health-care institutions.







## Door alarm

When to use a door alarm.

**We are increasingly confronted by our aging demography. For care institutions, this will involve an increasing number of residents who require more attention than used to be the case in the past. The door alarm will help you meet this challenge.**

Suppose you have a patient or resident who would be better off not to leave his or her room without an attendant. How will you make sure of this? It's almost impossible to keep a permanent watch. Still, should the person involved leave his or her room, it is imperative that you are warned of the fact. The answer is very simple: the Vahlkamp door alarm.

The door alarm comprises a magnetic contact that is mounted onto the door. As soon as the resident leaves his room and opens the door,

a transmitter unit will activate the existing alarm system. This way, you can go and have a look immediately, to help prevent unsafe situations from occurring. To avoid unnecessary alarm situations, for example when a room is entered by one of your staff, an interval time has been set. This will allow sufficient time to reset the alarm.

The door alarm can be expanded upon by adding a wireless alarm transmitter or fire alarm.

The door alarm is provided by Vahlkamp. This company has all the experience and knowledge needed to meet the communication needs of health-care.







## Agitation Detector

A simple solution for difficult moments

**Although many patients require permanent watchfulness, you can't be in all places at once. And if a patient or resident becomes agitated, he or she does need prompt attention.**

The agitation detector developed by Vahlkamp will detect all sounds that betray agitation, such as screaming, crying and yelling. The agitation notice, with an exact indication of the location, is immediately transmitted to the nurse alarm system, allowing prompt action to be taken. Easily installed and operated.

The agitation detector is easily installed and operated. The system comprises a sound receiver and a cable connecting up to the existing alarm system. The receiver is connected to a 220V-240V socket by means of an adapter.

### **Provided with an on/off switch**

The agitation detector, which is provided with an on/off switch, is ideally mounted at a height of approximately 1.75 metres, in a central location. Using a small turning knob, the sensitivity of the receiver is adjusted to the size of the room and the particular situation.







# Home Care Solution

A protective hand, Phone detector and Mobile detector

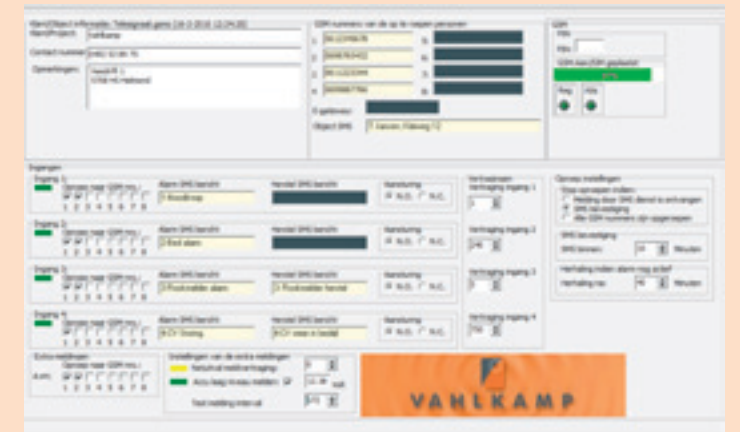
Early 2011, in line with our continuous search for improvements, Vahlkamp has introduced a new application for both the Bed Alarm and the Epi-Watcher. With this technical application, we were able to optimise security and confidence. Naturally, the simplicity and ease of use – for which we are renowned – have remained intact.

### Eminently suitable for Home Care applications

Vahlkamp has adapted its equipment for easy connection to the Phone detector. When the Phone detector is activated by the Vahlkamp Bed Alarm or the Epi-Watcher, the telephone number first programmed in is automatically dialled. The person on the receiving end is informed of the activation of the alarm by means of a self-recorded message. This way, the necessary assistance can be provided immediately upon the alarm.

The Phone detector has no less than eight alarm inputs. Therefore, several Vahlkamp alarm products can be connected to it. Four numbers can be programmed for each input. If a telephone call is not answered, the next number is dialled automatically.

It is therefore very suitable for Home Care Solutions



### Mobile detector

The GSM detector for which Vahlkamp has also adapted its products, operates according to the same principle as the Telephone detector, except that it does not make use of a fixed telephone line but of the GSM network. The advantage is that this version may be used in any location where a GSM network is available. The four inputs of the GSM detector can divert calls to up to eight Cell phones. This is done by means of a text message.







## Wireless Customisation

### Customisation, even in case of paraplegia

Because of increasing customer demands, we are continuously looking for ways to expand our existing product range with new applications. That is how the Tele Call, after a modification in the autumn of 2010, can now also be used by patients suffering from paralysis.

Up till then, the Tele Call could not be used by paraplegics and people with various forms of immobilisation. Thanks to the development of two additional instruments and an adjustment of the software, this is now a thing of the past.

Patients with muscular debilities or even near-total paralysis can now use a flexible blowpipe to activate the Tele Call. This tube is easily mounted to the bed.

For patients who cannot blow, or only with great difficulty, a microswitch called the 'buddy button' was developed. By means of tiny head movements, the patient is able to activate the Tele Call.

#### Special switches

In general, switches developed by Vahlkamp will serve most purposes of the majority of our target groups. In 2010, continuous market research has led to the development of new switches, which allow us to customise our products to more specific situations and even the tiniest target groups.

#### Peace of mind

Stressed Patients. A scientific term that sounds rather unpleasant. The term indicates that certain patient groups, for various reasons, demonstrate a raised stress pattern. Especially for this group, Vahlkamp developed a new addition to the Tele Call system.

If this module is installed, patients who belong to this target group will hear a message that will set their minds at ease. So they will know that their signal was successfully transmitted and that help is on its way.

#### Proximity

Some older patients find it difficult to operate the Tele Call because of problems with their hand function. Thanks to the proximity switch, this is no longer a problem. With this switch, the patient does not have to touch the Tele Call; his or her proximity to the device is all that is needed. Naturally, the optimum results will be discussed with you to see which solution best matches each particular patient.

Wrist alarm



Voice Switch



Microswitch buddy button



Blowpipe



Large pushbutton



Buddy button



Table alarm





